

# From Symphony #4 in Eb Major, "Romantic", WAB 104

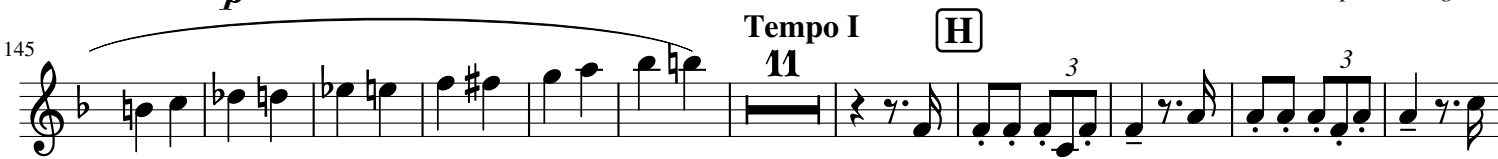
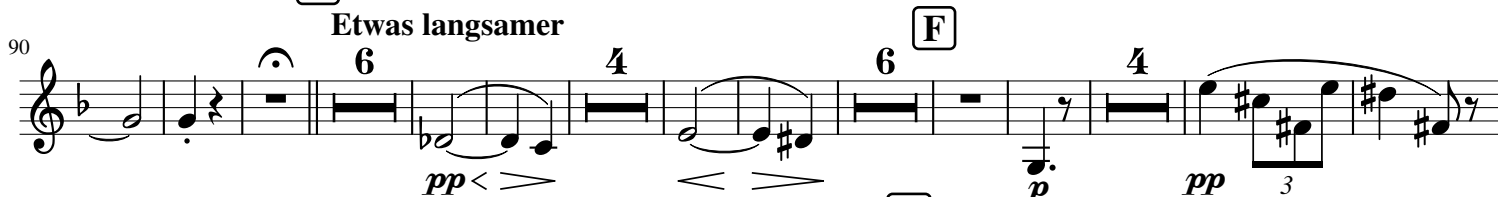
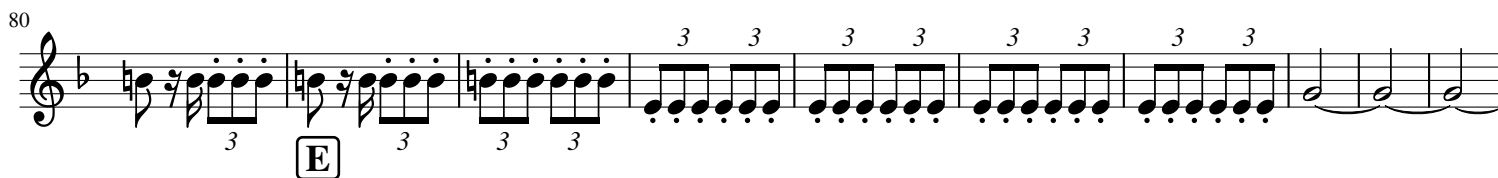
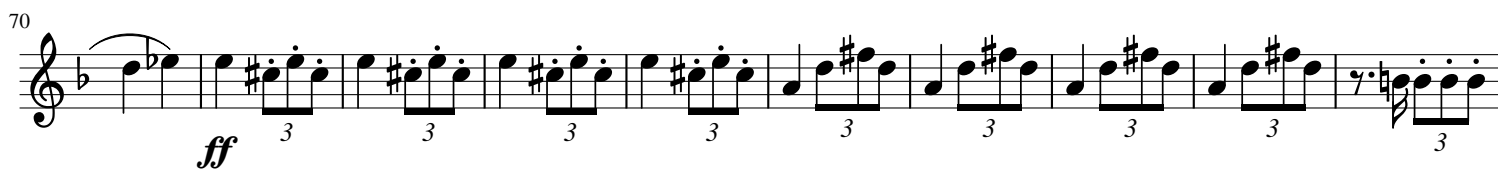
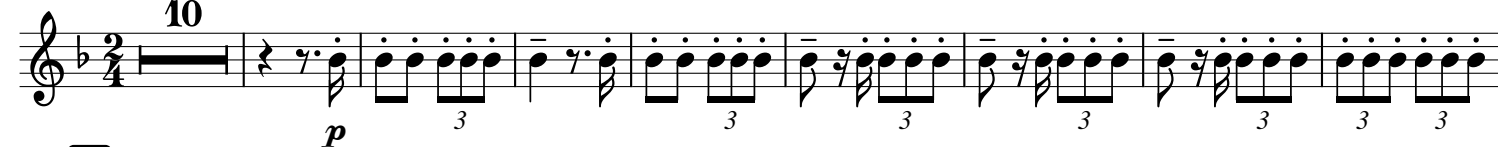
Horn in F 5

III. Scherzo  
for GW

Anton Bruckner (1824-1896), arr. Chevallier

Bewegt ♩ = 126

10



167 I

182 *f*

Detailed description: Musical staff 167-182. Starts with a treble clef and a key signature of one flat. Measures 167-182 contain various triplet and eighth-note patterns. Measure 182 ends with a forte (*f*) dynamic marking.

183 K

199 *p* L *pp*

Detailed description: Musical staff 183-199. Continues with triplet and eighth-note patterns. Measure 199 features a piano (*p*) dynamic marking, a section labeled L, and a pianissimo (*pp*) dynamic marking.

200 *p* *ausdrückvoll*

211 *p*

Detailed description: Musical staff 200-211. Starts with a treble clef and a key signature of one flat. Measure 200 has a piano (*p*) dynamic marking and the instruction *ausdrückvoll*. Measure 211 ends with a piano (*p*) dynamic marking.

212

217 *pp*

Detailed description: Musical staff 212-217. Continues with triplet and eighth-note patterns. Measure 217 ends with a pianissimo (*pp*) dynamic marking.

218 M N *mf*

231 *mf*

Detailed description: Musical staff 218-231. Features a long melodic line spanning measures 218-231. Measure 231 ends with a mezzo-forte (*mf*) dynamic marking.

232 O *f*

242 *f*

Detailed description: Musical staff 232-242. Continues with triplet and eighth-note patterns. Measure 242 ends with a forte (*f*) dynamic marking.

243 *dim.*

251 *dim.*

Detailed description: Musical staff 243-251. Continues with triplet and eighth-note patterns. Measure 251 ends with a *dim.* (diminuendo) instruction.

252 **Gemächlich (Trio)** *pp*

261 *pp*

Detailed description: Musical staff 252-261. Starts with a treble clef and a key signature of three flats. Measure 252 has a 4-measure rest. The section is marked **Gemächlich (Trio)** and *pp*. Measure 261 ends with a pianissimo (*pp*) dynamic marking.

262 *pp*

269 *pp*

Detailed description: Musical staff 262-269. Continues with eighth-note patterns. Measure 269 ends with a pianissimo (*pp*) dynamic marking.

270

279

Detailed description: Musical staff 270-279. Continues with eighth-note patterns. Measure 279 ends with a final note.

278 **P** 4

290 **Q** *pp* **Tempo I** 10 *cresc.* *p* 3 3

317 **R** *poco a poco cresc.* 3 3 3 3 3 3 3 3

326 **S** 6 4 6 4 *Etwas langsamer* *pp* *p*

355 **T** 10 *langsamer* *pp* 3 *p*

378 **U** **Tempo I** 11 *poco string.* 3

401 3 3 3 3 3 3 3 3 8 *f* 3

417 **W** 5 4

433 3 3 4 *p* *pp* *p* *ausdruckvoll*

447 **X** 3 3 3 3 3 3 3 3 3 3 3 3

453

Y

*pp*

466

Z

*mf* poco a poco cresc. *f*

477

$\emptyset$

485

*ff*

493